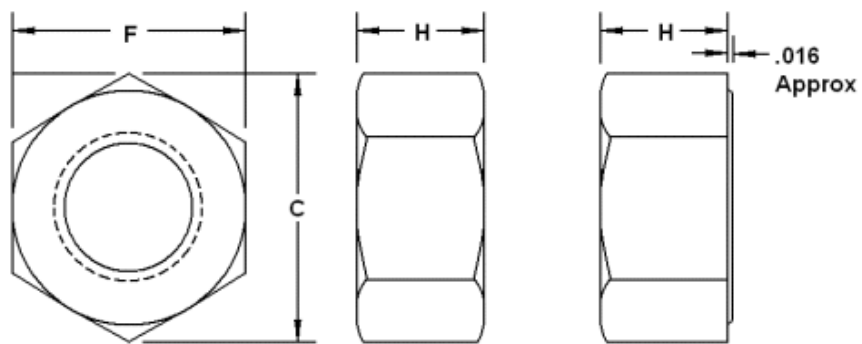


## Machine Hex Nuts



### Standard Pattern Nuts

Plain = NM020----      Zinc = NM020----Z1

### Small / Extra small Pattern Nuts

Stainless = NMS188----      Brass = NMSBRS----  
 Stainless = NME188----      Brass = NMEBRS----  
 Stainless and Brass only

Nominal Size	F	H	Weight Per C
	Width Across Flats	Thickness Hex Nut	
2-56	3/16	1/16	.04
3-48	3/16	1/16	.04
4-40	¼	3/32	.10
5-40	5/16	7/64	.20
6-32	5/16	7/64	.20
8-32	11/32	1/8	.27
10-24	3/8	1/8	.32
10-32	3/8	1/8	.32
12-24	7/16	5/32	.52

Nominal Size	F	H	Weight Per C
	Width Across Flats	Thickness Hex Nut	
0-80	5/32	3/64	.01
1-72	5/32	3/64	.01
2-64	3/16	1/16	.04
3-56	3/16	1/16	.04
SP 4-36	3/16	1/16	.04
SP 4-40	3/16	1/16	.04
4-48	¼	3/32	.10
5-44	5/16	7/64	.20
SP 6-32	¼	3/32	.10
6-40	5/16	7/64	.20
ESP 8-32	¼	3/32	.10
SP 8-32	5/16	7/64	.20
8-36	11/32	1/8	.27
12-28	7/16	5/32	.52